

# Attachment E – Current and Proposed Maps

RR-2024-35 (PP-2022-1275)

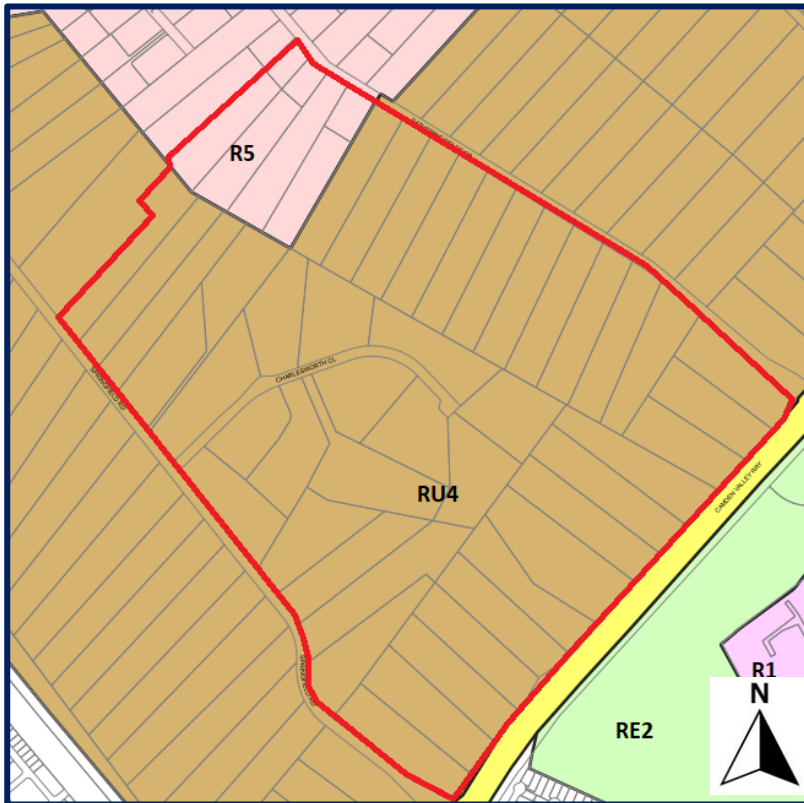


Figure 1 Current zoning (Source: NSW Spatial Viewer, 2025)

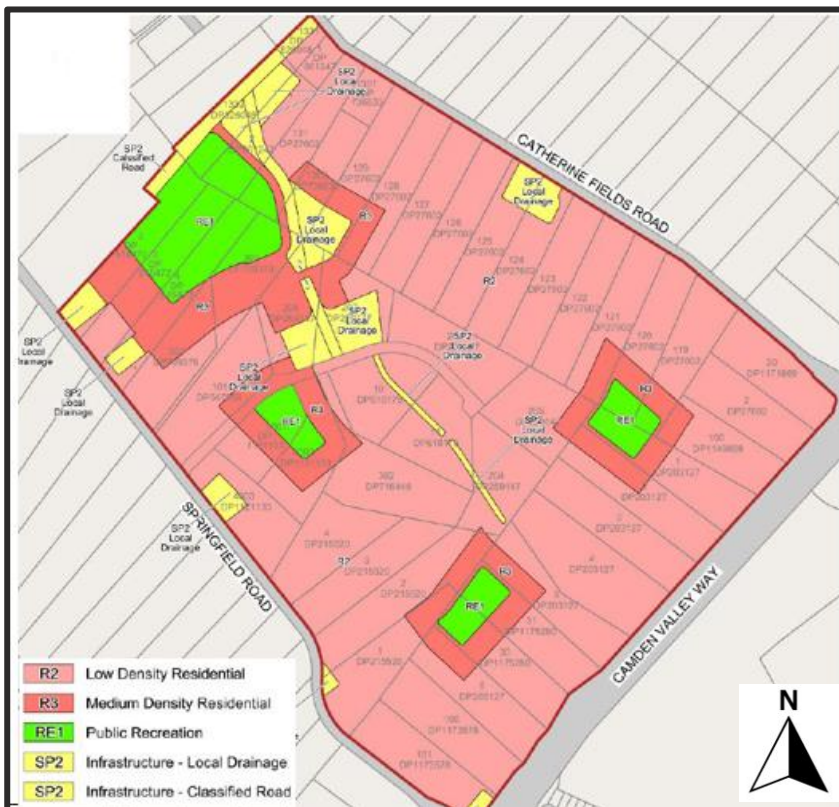


Figure 2 Proposed zoning (Source: Planning Proposal 2022)

# Attachment E – Current and Proposed Maps

RR-2024-35 (PP-2022-1275)



Figure 3 Current Height of Buildings Map (Source: NSW Spatial Viewer, 2025)

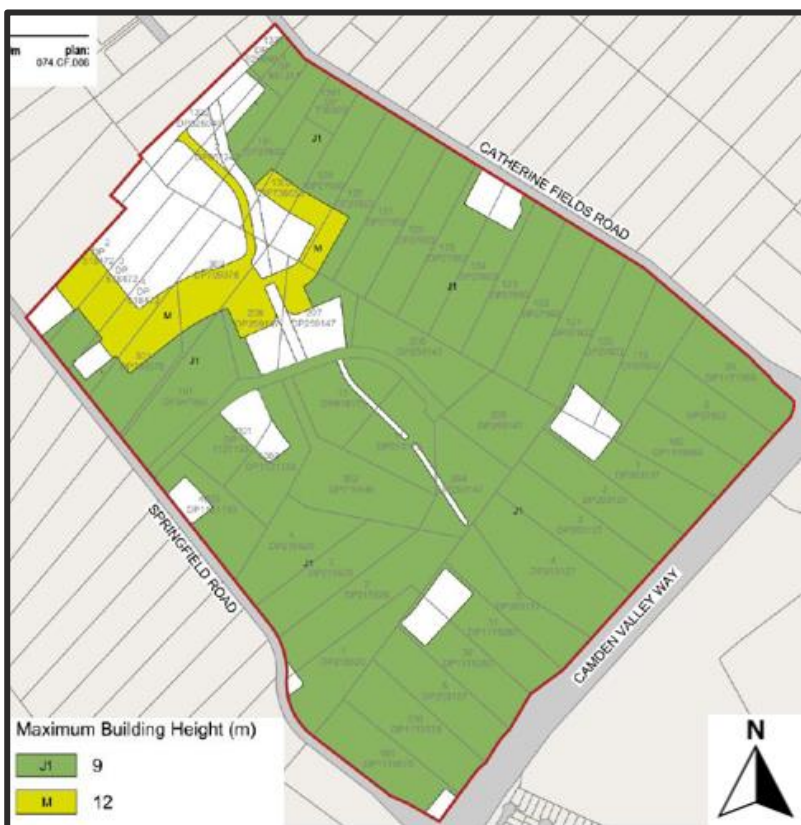


Figure 4 Proposed Height of Buildings Map (Source: Planning Proposal, 2022)



# Attachment E – Current and Proposed Maps

RR-2024-35 (PP-2022-1275)

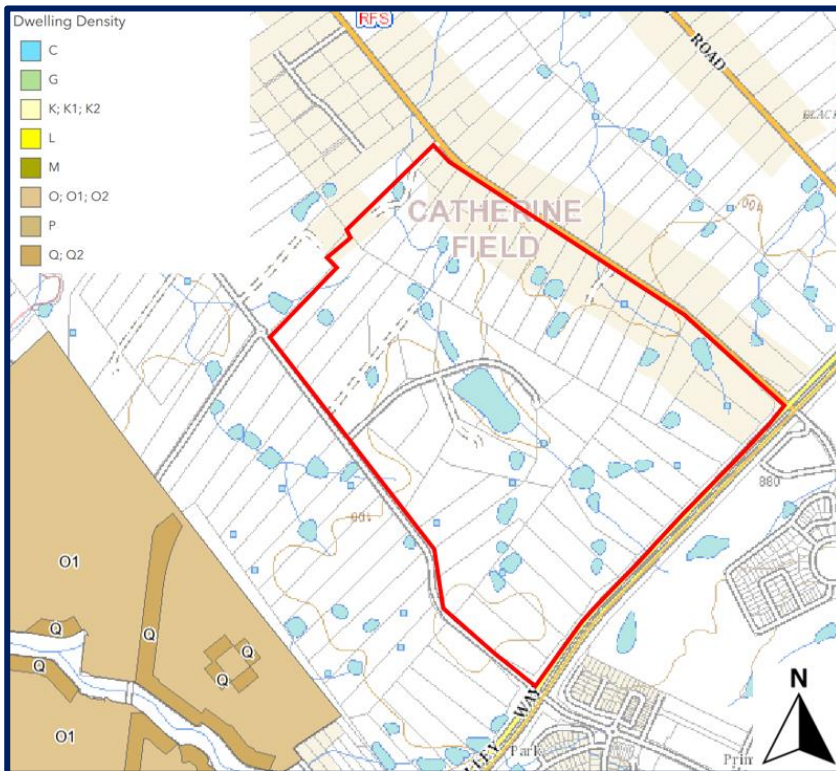


Figure 5 Current Residential Density Map (Source: NSW Spatial Viewer, 2025)

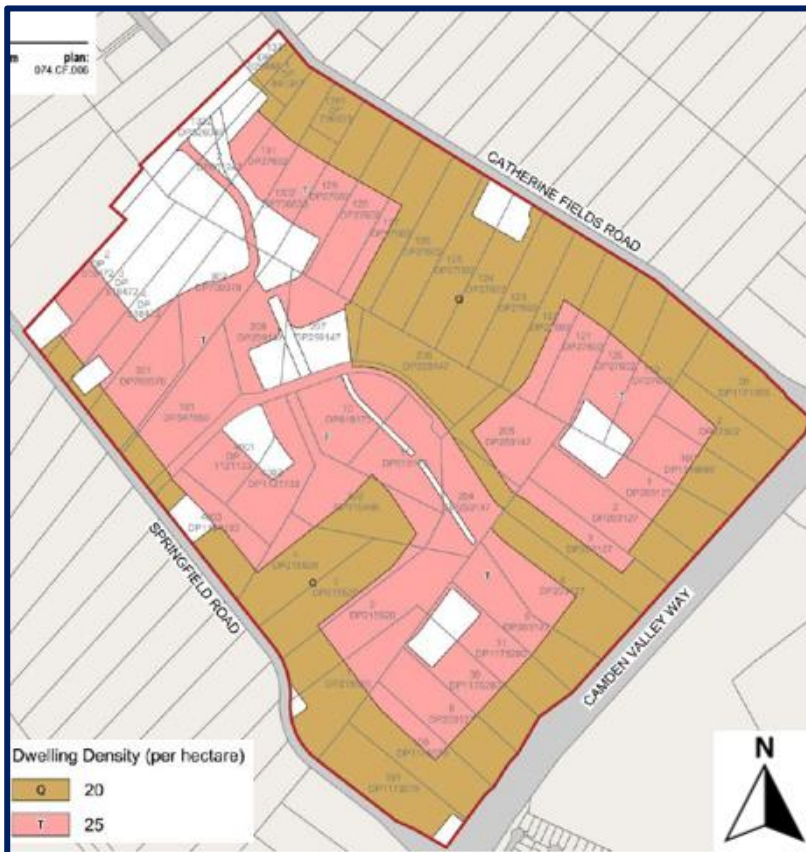


Figure 6 Proposed Residential Density Map (Source: Planning Proposal, 2022)

# Attachment E – Current and Proposed Maps

RR-2024-35 (PP-2022-1275)

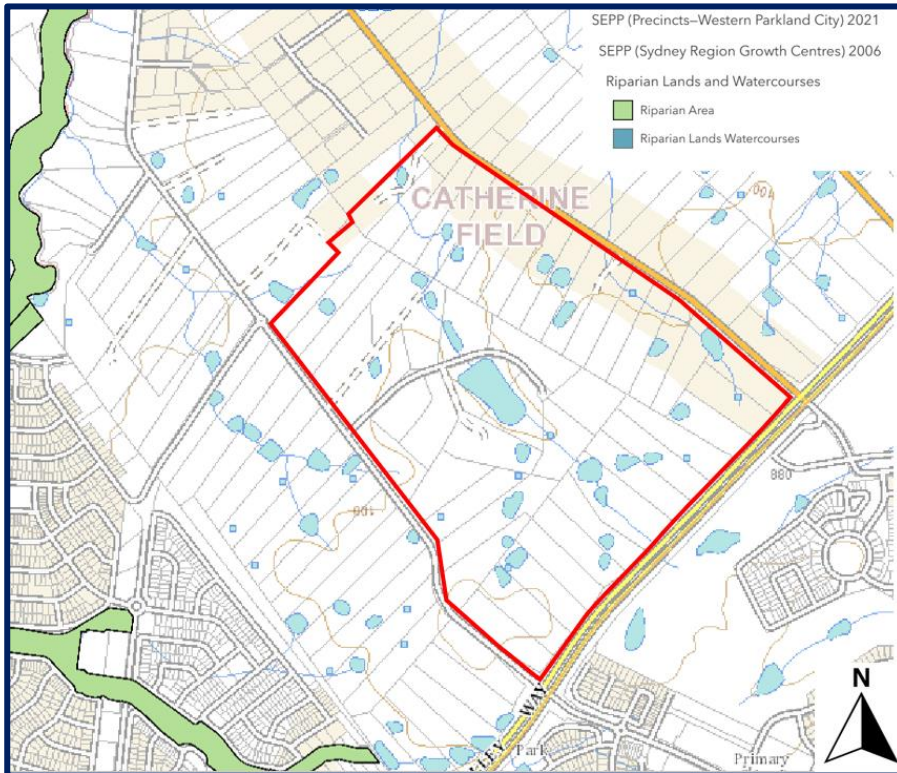


Figure 7 Current Riparian Corridor Protection Map (Source: NSW Spatial Viewer, 2025)

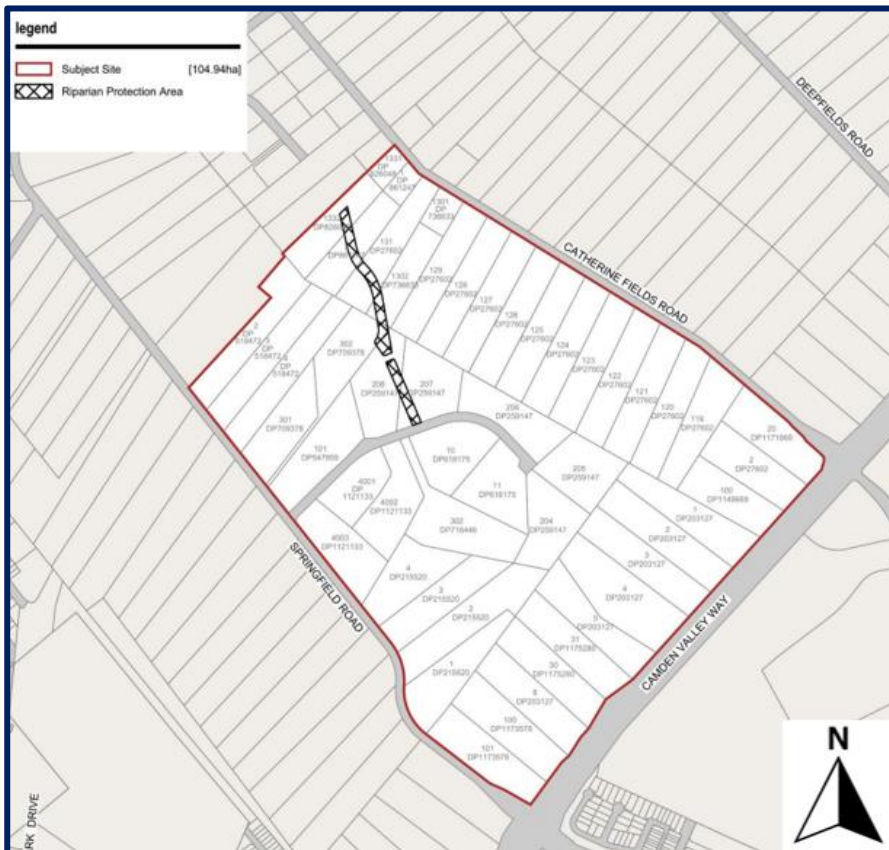


Figure 8 Proposed Riparian Corridor Protection Map (Source: Planning Proposal, 2022)



# Attachment E – Current and Proposed Maps

RR-2024-35 (PP-2022-1275)

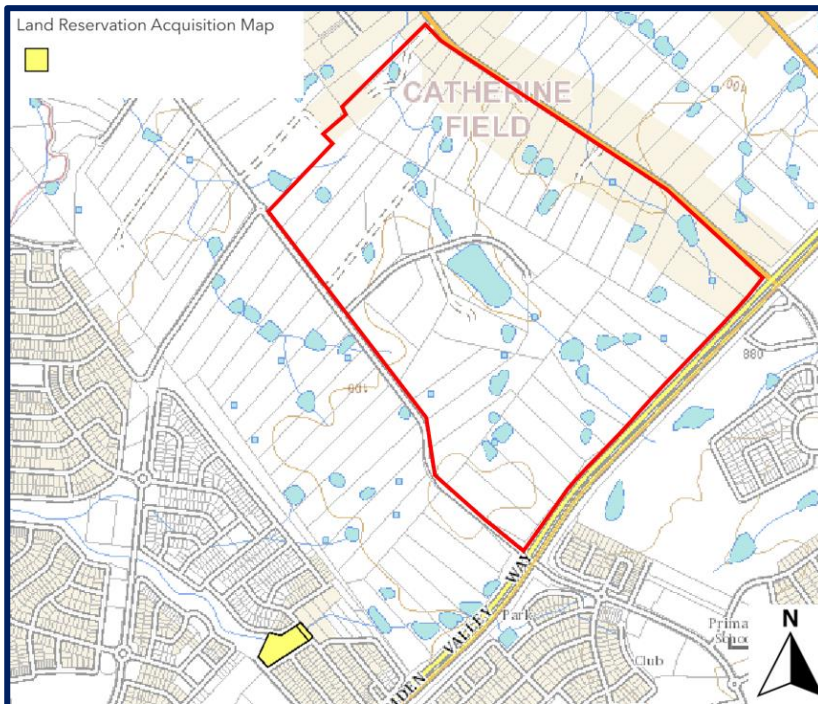


Figure 9 Current Land Reservation Acquisition Area Map (Source: NSW Spatial Viewer, 2025)

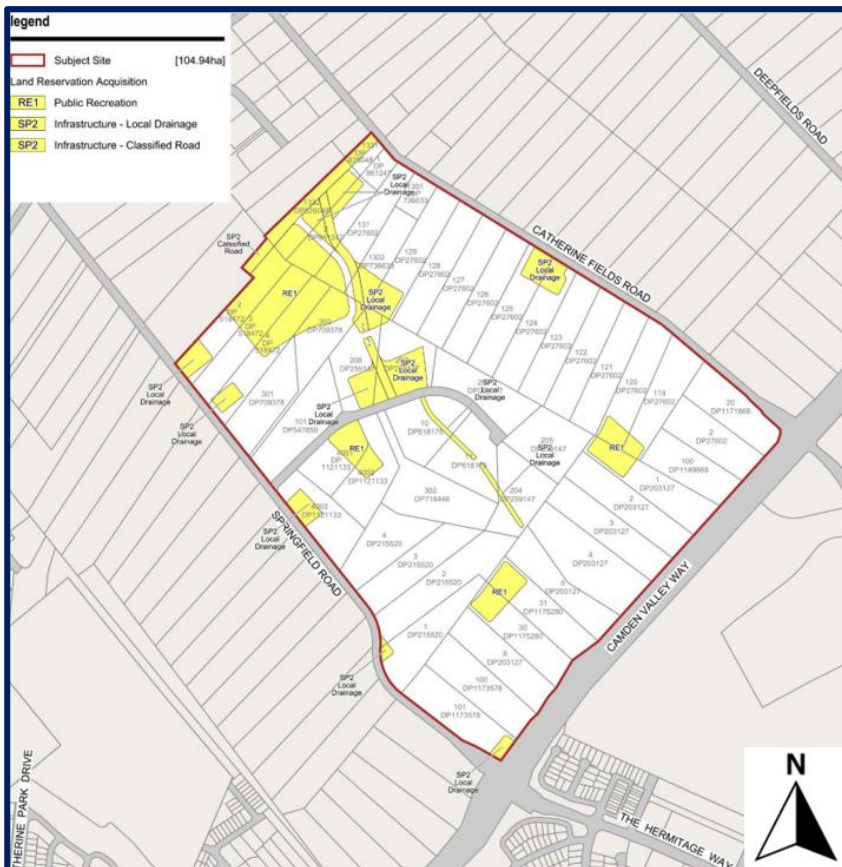


Figure 10 Proposed Land Reservation Acquisition Area Map (Source: Planning Proposal, 2022)